



Manufacturer and Exporter of Coconut Coir based products and Pet Supplies



No 668, Kanubichchiya,
Dummalasuriya,
Sri Lanka. 60260



Mr. Janith Priyankera
(Managing Director)
Gen : +94322241161
Mob / Whatsapp : +94716550681



Email - info@greencocoexpo.lk
Web - www.greencocoexpo.lk



Our Object is to consistently provide quality products for customers through our ethics, vast experiences, financial background, skilled laborers and volumes. green coco has become world's benchmark as far as quality and delivery norms are concerned in the field of coco related products. Born and Bred with a mission, we always care for our customer's satisfaction and we will be royal to them at all aspects of Business.

We provide high quality Coir base products / Substrate products / Pet supplies and other products with a satisfactory price for the importers, at the sometime we customize the products and delivering upon request.

We assure the buyer in terms of efficient services for regular interval orders is placed and until the shipment leaves the factory. Apart from this, we replace or rectify any manufacturing defects if occur even without any extra cost to the customers. Our effort is to make the best and achieve maximum customer's satisfaction

COCO PRODUCTS

GCE#2



Coco Plain Pallet

Size : Dia 30mm
Thickness 5mm+-2mm
Weight : 5gms
EC Value : Below 0.6
PH Value : 6-6.5
Packaging : 20pcs.Pack
25pcs.Roll



Coco Plain Pallet

Size : Dia 40mm
Thickness 5mm+-2mm
Weight : 5gms
EC Value : Below 0.6
PH Value : 6-6.5
Packaging : 20pcs.Pack
25pcs.Roll



Coco Plain Pallet

Size : Dia 50mm
Thickness 5mm+-2mm
Weight : 5gms
EC Value : Below 0.6
PH Value : 6-6.5
Packaging : 20pcs.Pack
25pcs.Roll

Available sizes : 36,42mm



COCO PRODUCTS

GCE#2



Coco Disc Square

Size : 12 x 12 cm
Thickness 1 cm
Weight : 100gms
EC Value : Below 0.6
PH Value : 6-6.5
Packaging : 10pcs.Pack
5pcs.pack

GCE#3



Coco Disc Rectangular

Size : 16 x 12cm
Thickness 1 cm
Weight : 150gms
EC Value : Below 0.6
PH Value : 6-6.5
Packaging : 10pcs.Pack
5pcs.pack

GCE#4



Coco Brick

Size : 20 x 12 x 5cm
Weight : 650gms
EC Value : Below 0.6
PH Value : 6-6.5
Packaging : 40pcs. Cartons

GCE#5



Coco Grow Bag

Size : 97.5 x 70 x 3.5
100 x 30 x 3.5
100 x 20 x 3.5
EC Value : Below 0.6
PH Value : 6-6.5
Packaging : Palati ed 250 pcs
For skid approx

GCE#6



Coco Bale

Size : 30 x 30 x 14 cm
Weight : 5kgs
EC Value : Below 0.6
PH Value : 6-6.5
Packaging : 215 pcs per skid

GCE#7



Coco Square Bag

Size : 6 inch
Weight : 1 kg
EC Value : Below 0.6
PH Value : 6-6.5

COCO FIBRE POTS

GCE#8



Thickness in mm	Top Dia In CM	Bottom Dia In CM	Height in CM
5-6	30	20	25
5-6	25	15	20
5-6	20	1	16
5-6	15	10	12
2-3	10.5	7	11
2-3	8	5	10
2-3	6	4	5
2-3	5	3	5

COCO HANGING BASKETS

GCE#9



Thickness in INCH	Top Dia In INCH	Centre Depth in INCH
5-6	10	5
5-6	12	6
5-6	14	7
5-6	16	8
5-6	18	9
5-6	20	10
2-3	10	5
2-3	12	6



COCO FIBRE PRODUCTS

Wall Mounted Basket: GCE#10



Fibre Trays: GCE#11



Used as primary bed for sowing seeds which are to be transplanted. Bigger Trays are supported with wooden strips on edges. Available sizes: 11.5" x 11.5" x 4", 17" x 17" x 3", 5" x 5" x 3"

Natural Fibre Discs:

Thickness in INCH	Top Dia In INCH	Centre Depth in INCH
5-6	10	5
5-6	12	6
5-6	14	7
5-6	16	8
5-6	18	9
5-6	20	10
2-3	10	5
2-3	12	6

GCE#12



Protects plant foot from direct sunlight, Retains moisture in the Plant foot, Avoiding the growth of weeds in the plant foot, available thickness 2 mm, 4mm.. 6mm, available sizes : 15,20,25,30 cm, 51 cm, 60cm and 90cm

Coco Fibre Mats: GCE#13



Thickness in Inch	Length in Feet	Breath in Feet
1	8	4
1/2	10	4
3/4	20	3

Fibre Deep Root Pots:

Thickness in MM	Top Dia In CM	Bottom Dia in CM	Height in CM
2-3	8	4.5	30
2-3	7	4	23

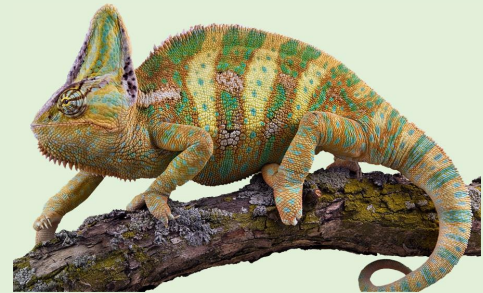
GCE#14



REPTILE SUPPLIES AND TERRARIUM PRODUTS

In the world, **Coconut Based Products** is wildly used as a terrarium substrate in various coco items for animal bedding. Such as

1. **1kg humus brick (20 x 20 x7 cm)**
2. **650g humus bricks (20 x 10 x 5 cm)**
3. **500 g Chip bricks (20 x 10 x 5 cm)**
4. **Spider brick (10 x 10 x 2.5 – 5 cm)**
5. **Mini brick (10 x 5x 5 cm)**
6. **Coconut shell dome home**
7. **Coco dish**
8. **Coco mat**
9. **Flexible vine**
10. **Coco hide**
11. **Coco home**



According to buyers request sizes can be varied. A reptile terrarium should be an open terrarium and Closed terrarium. Terrariums for the keeping of these animals are much more open and airier. Most of these systems consist of a simple substrate and coconut shell caves or other hiding places for shelter, a water bowl and maybe a branch or two for climbing. Coconut husk chips & coir peat is widely used as a valuable substrate for animal bedding also, depending on the requirement. This can be practical and easy to maintain type of cage for large collections.

These types of terrariums can be applied to environments for the keeping of small animals such as Chameleons, Geckos, Snakes, Turtles, Dart frogs, Tarantulas.

Coconut Shell Dome Home: GCE#15



3/4 nut.



Whole nut.



1/2 nut.

Coconut shell domes are hiding caves made from natural coconuts. They are excellent natural hiding place for retreating, sleeping, and breeding. For small terrarium animals. The coconuts are about 10-15 cm in size.

Coco Dish: GCE#16

Water Disc is a 100% natural product made from a coconut shell complete with natural husk. These items are made from real coconut and will help increase the beauty and appeal of any terrarium.



Hanging dish for feeding



Coco dish for feeding

Coco Mat: GCE#17



Coco mats are made from coco fibres. They are also useful as they offer protection from sight and climbing space.

Flexible Vine: GCE#18



The tough, naturally-textured surface makes your reptile or amphibian feel right at home. Flexi vine made from coco fibres. Flexi-Vine is the safe way to create a virtual "jungle" for your climbing pet.

Size: Vine is 6' long x 1/8"-1/4" in diameter

Coco Hide: GCE#19



Hides are made from natural coconuts. They are excellent natural hiding place for small animals and reptiles, amphibians will easily develop stress that will affect their activity and appetite. Hides also provide a shelter and or a cooler and moisture area in the terrarium



Coco Home: GCE#20



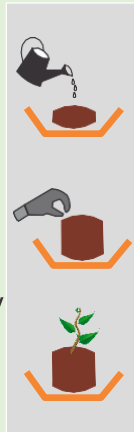
Homes are made from natural coconuts. They are excellent natural hiding place for small animals and reptiles or amphibian feel right at home. Hides also provide a shelter and or a cooler and moisture area in the terrarium.



USER MANUAL

For Pellets

1. Nature cocopeat pellet
2. Nature cocopeat net pellet
3. Small disk round upto 60 mm dia
4. Place the pellet in a tray
5. Add water in the tray or spray on the top
6. Leave for a min
7. The Cocopeat will comes up automatically
8. Now sow the seed starter
9. Leave for Germination
10. Find a healthy growth in a short span



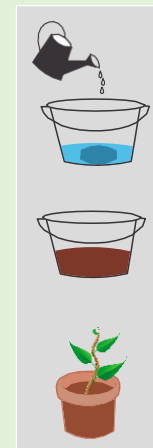
For Disk of any size with pot

1. Place a disk in the pot
2. Place the pot on the tray
3. Then add water in tray or spray water from top
4. Leave for 2 mins
5. Ensure the Coco peat will come to its level inside the pot and becomes loose.
6. Now sow the seed or plant a sapling
7. Leave for Germination
8. Find a healthy growth in a short span



For Bricks & Blocks

1. Nature coco peat disk round and square-upto 350gram and also upto 5 kgs
2. Place the cocopeat in a suitable container
3. Add 1.1liters of water to a proportionate degree of 100 grams
4. Leave few mins to come up
5. Cocopeat will comes up automatically
6. Now sow the seed or plant a sapling
7. Leave for Germination
8. Find a healthy growth in a short span
9. The main advantage over this product is that either it can be directly applied to the soil or can be placed in a tray to sow the seed or plant the seeding.



For Grow Bags

1. Use of separate container is not needed for grow bags.
2. Place the grow bag in the Opt Place.
4. Make holes to sow the seed or plant the sapling in the UVC treated cover wherever required
5. Add 1.3 liters water to a proportionate degree of 100 grams
6. Now sow the seed or plant a sapling
7. Leave for Germination
8. Find a healthy growth in a short span

